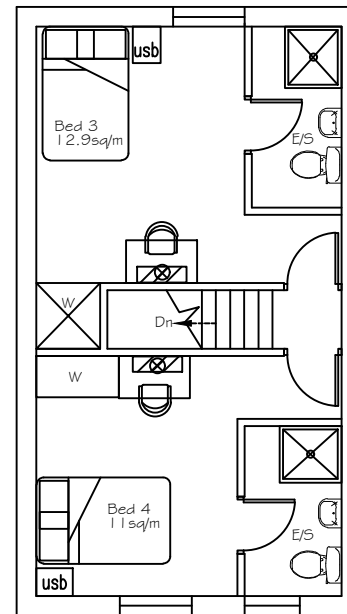


Proposed Ground Floor



Proposed First Floor



FLOOR PLAN LAYOUTS -  
19 SEDDON STREET - SALFORD

DISCLAIMER: FLOOR PLAN MEASUREMENTS ARE APPROXIMATE AND ARE FOR ILLUSTRATIVE PURPOSES ONLY. WHILE WE DO NOT DOUBT THE FLOOR ACCURACY AND COMPLETENESS, YOU OR OUR ADVISORS, SHOULD CONDUCT A CAREFUL, INDEPENDANT INVESTIGATION OF THE PROPERTY IN RESPECT OF MONETARY VALUATION